



# UltraStream Undersink Installation

ULTRA PURE ALKALIZING IONIZING HYDROGEN RICH ANTIOXIDANT WATER SYSTEM

# Undersink Installation

Congratulations on choosing the AlkaWay Undersink Kit for your UltraStream water system. By following the steps in this instruction sheet you'll have the best of both worlds - fabulous UltraStream water - and clear bench space, with minimum of fuss.

We have designed our undersink kit to be fully compatible with the UltraStream benchtop unit.

- Ceramic Faucet valves
- Manufactured in same USA factory
- Vented faucet design for safety
- John Guest attachments for simple install
- Video support for install ([support.alkaway.com](http://support.alkaway.com))
- Step by step instructions

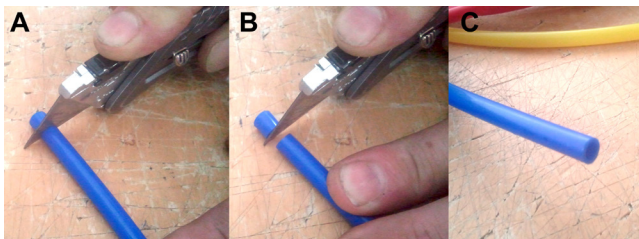
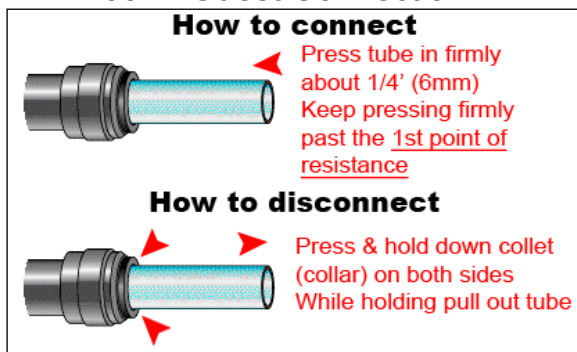
## Handy Tips

Familiarize yourself with 'John Guest'. These are special patented connection tools that allow ultra-simple connection of hoses and pipes. To attach a hose, all you need to do is push the hose into the fitting.

To remove, all you need do is push on the collet (ring) around the hose and pull on the hose at the same time, using the John Guest Tool (or fingernail).

It's important to remember to ensure the end of the hose is cut cleanly and at right angles.

## John Guest Connection



# What you will need (other than what's in this kit)

- Electric Drill.
- Metal Hole Saw - 25mm (1 Inch) to 32mm (1 1/4 Inch) for stainless steel sinks.  
For stone benches we recommend contacting a expert.
- Masking Tape.
- Rasp or Sand paper.

## Undersink Kit Content



**JOHN GUEST SIZE  
CONVERTER:**  
Connects  
UltraStream to the  
faucet via the **BI**  
hose.



COLD WATER CONNECTOR



**JOHN GUEST  
SPANNER**  
Used to REMOVE  
Size Converter to  
change filter  
*(Keep it handy. You'll  
need it to change,  
a butter knife also  
works).*



PRESSURE LIMITING VALVE (PLV)



TAP



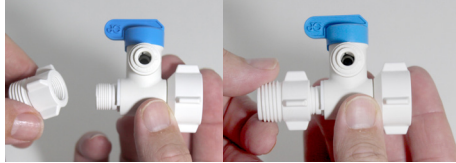
SPOUT



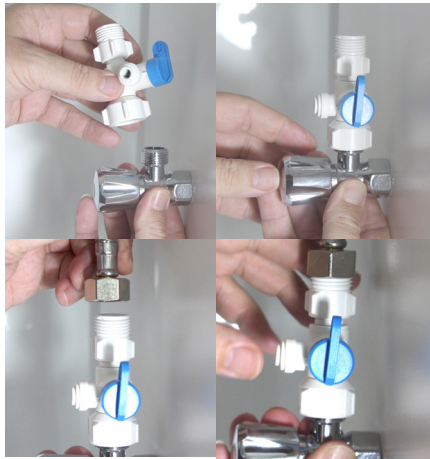
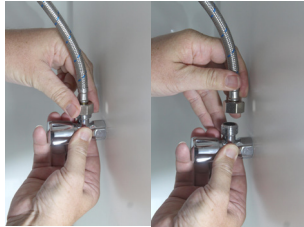
UNDERBENCH  
PLATE  
(Comes on faucet)

# 1: Connect the Undersink Connector.

1. Hand tighten the cold water connector pieces together.
2. Turn off the cold water supply. Using the shut-off valve below the sink or at the house water mains.



3. After shutting off the water open the kitchen faucet draining the remaining water out of the line. Turn on a (lower) garden tap to drain the water line.
4. Place a container below the sink, under the shut off valve and disconnect the cold water line.
5. Install the Cold water connector (Make sure it's turned OFF).
6. Reconnect the cold water line.



## 2: Position and Drill the Vented Faucet Hole

Locate a position on the bench top or sink which will ensure the UltraStream Vented Faucet spout can flow into the sink when running and turned off.

You can use the Underbench plate to help with placement and finding the centre, and make sure you can access this hole from under the sink/benchtop.

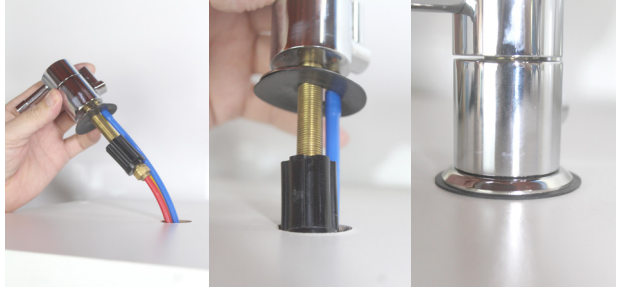
1. Place tape over the spot where you are to drill to allow the drill to stay centered.
2. Drill a hole between 25mm-32mm (1 inch to 1 1/4 inches) hole in sink top. Drilling in stone requires an expert.
3. Smooth any sharp edges using a rasp or sand paper so you don't damage the tubes when installing.

### 3: Install Vented Faucet

1. Loosen the brass nut and slide out underbench plate and place aside.



2. **Above** the sink > feed the tubes in to the drilled hole making sure the rubber seal is in place.



3. **Below** the sink > Insert underbench plate and hand tighten the brass nut (only use a spanner if necessary Do not over tighten).



4. Push spout into the hole in the top of the faucet.

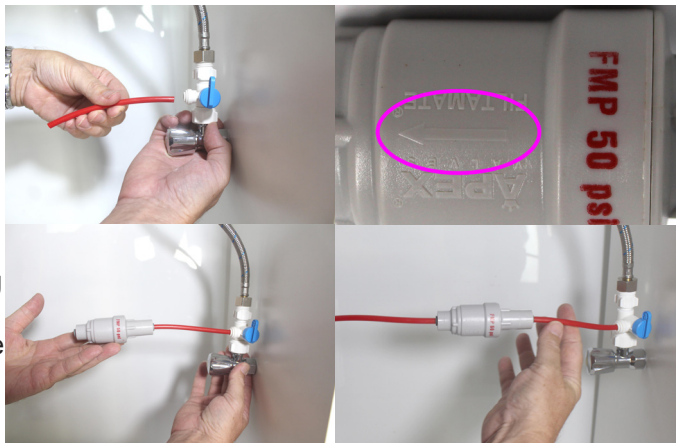


**Note: The spout is removable and can swivel 360°**



## 4: Install Pressure Limiting Valve (PLV).

1. Cut about 20cm off the **RED** hose (Cut at right angles and cleanly).
2. Check flow direction. The flow arrow must point towards the UltraStream away from the tap.
3. Install the PLV by pushing firmly each cut end of the hose into either end of the PLV.
4. Connect the **RED** tube to the PLV.



## 5: Install UltraStream Unit

(see John Guest Connector Usage Instructions on previous page)

1. Position the UltraStream in desired location under the sink.
2. Remove the bottom cover.
3. Connect the **YELLOW** tube to the bottom of the UltraStream.
4. (Optional) Replace the bottom cover.
5. Insert the John Guest Size Converter into the outlet on the top of the UltraStream. Then connect the **BLUE** tube into the top of the Converter as pictured.
6. (Optional) Turn off the water again and cut all the tubes to adjust length (see "How to cut tubes"). Make sure you leave enough tube length to easily change your filter.



**Note:** Cutting the tubes to be as short as possible undersink may seem a good idea, but remember that if you do choose to cut them, you will not be able to easily relocate the UltraStream to the benchtop for filter replacement.

# Test and Flush

1. Make sure Cold water connector tap is turned off.
2. Turn water ON at mains or shut-off valve undersink.
3. Turn on Cold water connector tap and check for any leaks.
4. If a leak shows, repeat Step 7 points 1-3.
5. Now turn ON the vented faucet and check again for leaks.
6. Run filter for 5-10 minutes to flush.
7. Optional: You can adjust the flow rate also by adjusting the blue and white tap at the bottom of the UltraStream (see next section).

# Testing pH and Setting Flow

## Testing pH

How to test the pH of your water.

1. Add 2-3 drops of this reagent to 30ml of water to be tested.
2. Mix well.
3. Compare the final colour of the solution to the enclosed colour chart to get your reading (It's a good idea to use a white background).
4. pH Colour Readings pH<7 Acidic, pH=7 Neutral, pH>7 Alkaline.

## Setting the Flow Rate

How to get the correct water flow rate from your UltraStream.

1. Turn your UltraStream on its side.
2. Locate the base plate with two holes and remove.
3. Locate the blue and white tap.
4. Full flow rate occurs when the blue and white tap is in line with incoming hose.
5. For best performance flow rate should be around litre per minute.
  - Easy way: For most installations all you need to do is to turn the blue and white tap 45 degrees.
  - Harder way: Put a 1 litre container under the UltraStream spout. Use a clock with a second hand and time 1 minute. The container should be full at the end of 1 minute.

*For more help and support go to [support.alkaway.com/](https://support.alkaway.com/)*

# Troubleshooting

## Slow or No Water Flow

- Check the tap on the bottom of the UltraStream is not turned off.
- Do you have any pre-filters attached? If so, remove the hose from the bottom of the UltraStream and make sure you are getting water flow.
- Make sure the hoses aren't kinked or twisted.
- If your UltraStream is slowly reducing in flow, it may be that it is nearing its end of use. If you continue to turn on your tap after it ceases flowing either your hose or your filter cartridge may fail.
- Your filter might be blocked and needs to be replaced.
- High Sediment water may require a special paper sediment prefilter to preserve your UltraStream filter's life.

## Diverter sprays or leaks

- Apply plumbers tap to the thread of the diverter.

## Leaking water from connectors

- Remove to tube for the John Guest connector and re-cut ends.
- Try Pushing the tube further into John Guest fitting.

**Need extra help?  
go to  
[support.alkaway.com](http://support.alkaway.com)**

## Leaking from top

- Press the spout down firmly.

## Adapters won't fit my tap

- Contact us and we should be able to help. (Contact your local supplier or go to [support.alkaway.com](http://support.alkaway.com))

## UltraStream Spurts

- This is due to the hydrogen content in the water. This water is the best to drink.

## The Drip

- With some water sources, the water is more acidic. This then creates more molecular Hydrogen (the antioxidant) as it reacts with the O-Dobi media. The hydrogen is generated in gas form. This gas must get out of the UltraStream otherwise it will bulge and then leak. At rest after use, the gas pushes a little water out of the UltraStream which produces a drip. This drip will stop after a period of time. Remember this is not a leak. It is just the water in the UltraStream above the O-Dobi being pushed out.

## No pH Reading

- Are you using liquid pH Reagent similar to what was supplied this unit.
- pH Reagent might be out of date or stored incorrectly.
- It might be time to replace your filter.